

LORESHO *Ridge*



SAKILE

PROPERTIES
SHAPING TOMORROW



Love where you *Live*

LORESHO *Ridge*

Loresho Ridge is a serene modern estate with all the advantages, facilities and luxuries that come with a high-end gated community. Located in the plush Loresho area, its boasts greenery and a quiet serene environment.



We believe that a gated community should be self-sufficient with all amenities provided within the gated community. Once inside Loresho Ridge, sit back, relax and enjoy peace in utter tranquility. All this away from the hustle and bustle of the modern city.

KENYA POWER PENSION FUND

Love where you *Live*





We created a gated community with the aim of attracting would-be home owners interested in investing in their future. Bearing in mind the different needs and abilities of each potential customer, we have a range of products that will appeal to each person's lifestyle and budget.

Fahari Villa | Kilele Ridges | Makao Ridges | Watani Ridges | Johari Apartments

LORESLID
Ridge

LORESHO
Ridge

Fahari Villa

Front



Rear



Each unit has 2 Parking slots and beautifully landscaped external spaces.
The total built up area is 265 square meters.

Fahari Villas are situated on a cul-de-sac on the highest point of the estate, making them private and serene. There are 12 units with private landscaped gardens, each sitting on a parcel of land measuring approximately 450 square meters.

Love where you *Live*



LORESHO
Ridge

Fahari Villa

Lounge



Study Room

Floor Plans



First floor



Ground floor

- 4 bedrooms, all en-suite with built-in wardrobes.
- Spacious study room on the ground floor and family room on the first floor.
- Open plan spacious lounge with brilliant views, linked to a dining area, which is in turn linked to open plan kitchen (has option of being enclosed).
- Adequate kitchen and laundry space, as well as drying yard/splash area.
- Self contained domestic staff quarters.

Love where you *Live*



LORESHO
Ridge

Kilele Ridges

Front



Rear



Each unit has 2 parking slots and beautifully landscaped external spaces. The total built up area is 242 square meters.

The Kilele Ridges are impressive detached family town houses, situated at the highest point of the estate. There are 15 units with private landscaped gardens, each sitting on a parcel of land measuring approximately 330 square meters.

Love where you *Live*



Kilele Ridges

Lounge



Family Room

Floor Plans



First floor

Ground floor

- 4 bedrooms, all en-suite with built-in wardrobes.
- Spacious family room on the first floor.
- Open plan spacious lounge with good views, linked to a dining area which is in turn linked to open plan kitchen (has option of being enclosed).
- Adequate kitchen and laundry space, as well as drying yard/splash area.
- Self contained domestic staff quarters.

Love where you *Live*



LORESHO
Ridge

Makao Ridges

Front



Rear



Each unit has 2 parking slots and well landscaped external spaces.
The total built up area is 222 square meters.

The Makao Ridges are located on the valley section of the development and boast impressive views of the neighbourhood. There are 54 units each with private landscaped gardens and sitting on a parcel of land measuring approximately 330 squares meters.

Love where you *Live*



LORESHO
Ridge

Makao Ridges

Lounge



Floor Plans

First floor



Dining & Kitchen

Ground floor

- 4 bedrooms, all en-suite with built-in wardrobes.
- Open plan spacious lounge with good views, linked to a dining area which is in turn linked to open plan kitchen (has option of being enclosed).
- Adequate kitchen and laundry space, as well as drying yard/splash area.
- Self contained domestic staff quarters.

Love where you *Live*



LORESHO
Ridge

Watani Ridges

Front



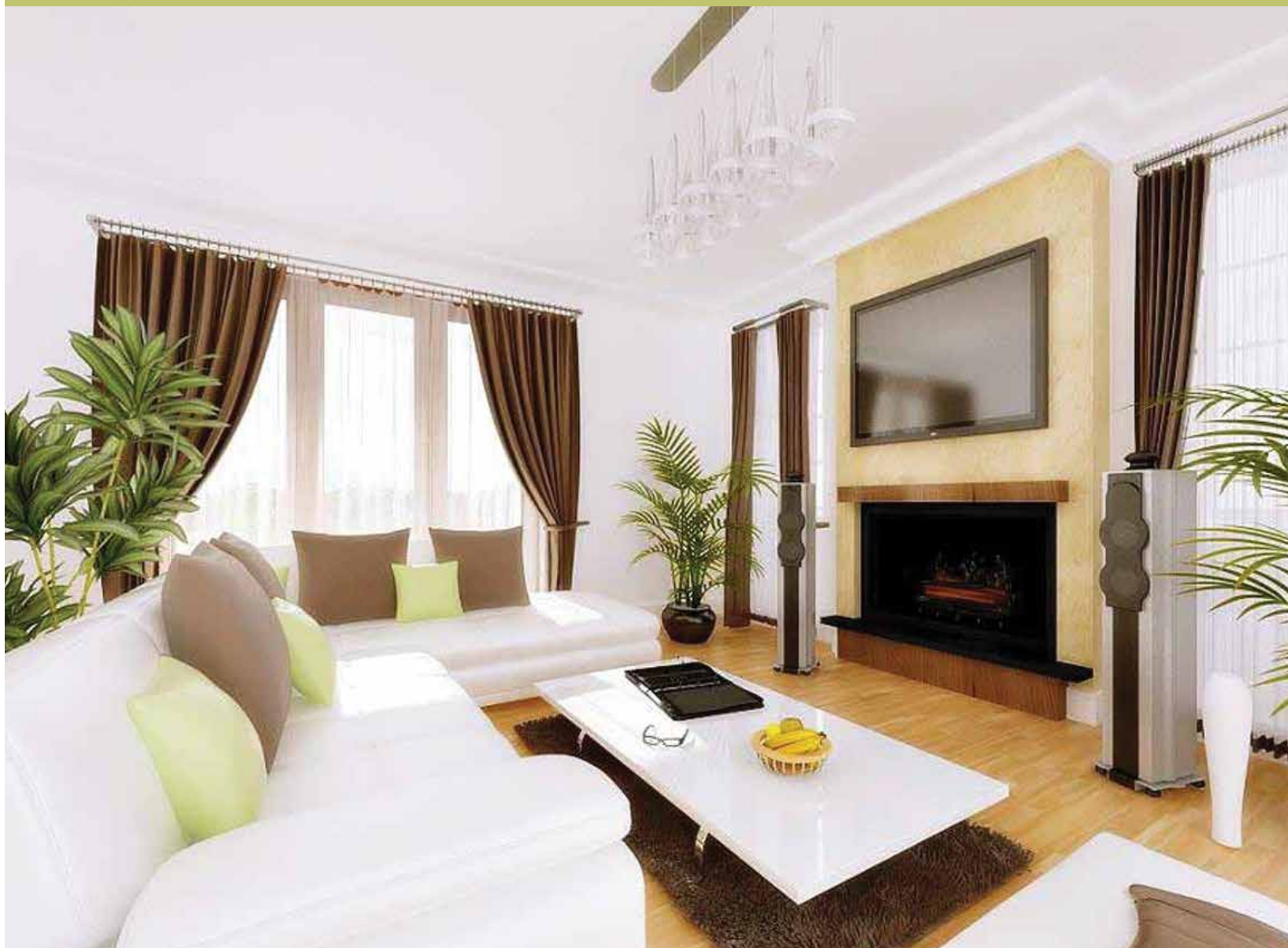
Rear



Each unit has 2 parking slots and beautifully landscaped external spaces
The total built up area is 238 square meters.

The Watani Ridges being contemporary in design, have split levels enjoying far reaching views over the expansive greenery in the neighbourhood. They are 13 split level units with private landscaped gardens, each sitting on a parcel of land measuring approximately 330 square meters.

Love where you *Live*



LORESHO
Ridge

Watani Ridges

Lounge



Floor Plans



First floor



Dining & Kitchen

Ground floor

- 4 bedrooms, all en-suite with built-in wardrobes.
- Open plan spacious lounge with good views, linked to a dining area, which is in turn connected to open plan kitchen (has option of being enclosed).
- Adequate kitchen and laundry space, as well as drying yard/splash area.
- Self contained domestic staff quarters.

Love where you *Live*



LORESHO
Ridge

Johari Apartments

Front



Side



Each unit has 2 parking slots and well landscaped external spaces.
Each apartment unit covers a total area of 150 square meters.

The Johari Apartments are located on the southern boundary of the development, and enjoy excellent views of the estate with an expansive garden for playing and relaxing. There are 11 blocks of 6 units each.

Love where you *Live*



LORESHO
Ridge

Johari Apartments

Lounge



Bedroom

- 3 bedrooms, all en-suite with built-in wardrobes covering a total area of 1505m.
- Has open plan spacious lounge with good views, linked to dining area which is in turn linked to open plan kitchen (has option of being enclosed).
- Adequate kitchen and laundry area.
- Self contained domestic staff quarters

Floor Plans



Love where you *Live*



Shared Facilities

- Swimming pool
- Club house
- Kindergarten/day care facilities
- Water feature for recreational purposes
- Borehole
- Elevated and underground water storage tanks
- Back-up generator
- Play areas
- Boundary wall, water reservoir and electric fence
- On site waste water treatment plant
- 2 welcoming gate houses which shall be manned
- Cabro paved internal roads with pedestrian path



Love where you *Live*



LORESHO *Ridge*

Location





The map above shows the location of Loresho Ridge. You may choose to approach from the Loresho area or from Waiyaki Way. The development is 7 kilometres from Westlands and can be accessed from Waiyaki Way or Kaptagat Road, through Lion's Eye Hospital.

Love where you *Live*

LORESHO
Ridge



Love where you





LORESHO *Ridge*



A property arm of the Kenya Power Pension Fund Limited

P.O. Box 30099-00100, Stima Plaza (Ground Floor)

Tel: 020 3201020 Email: info@kplc-rbs.co.ke

www.kplc-rbs.co.ke